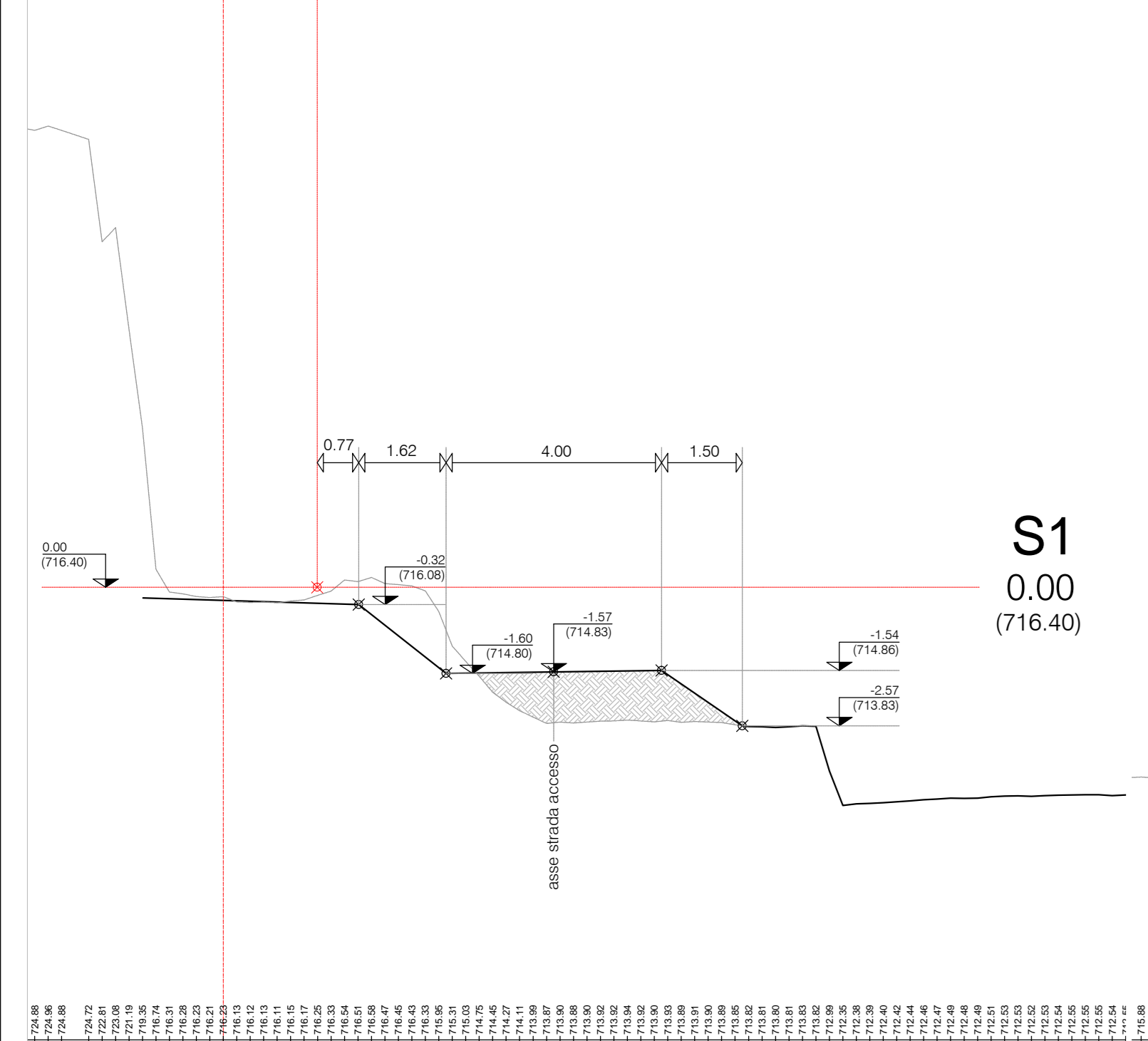
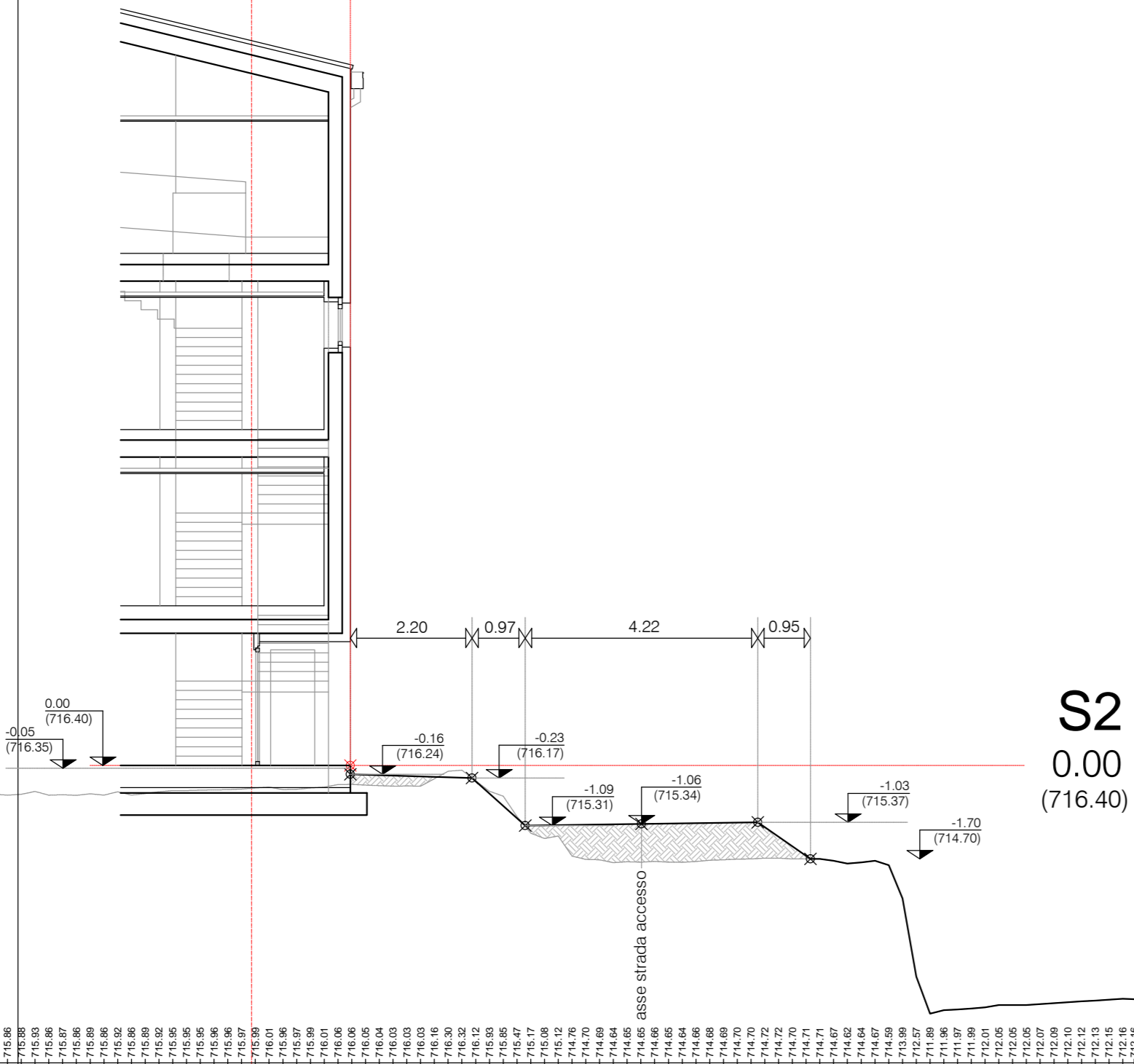


SEZIONE 1-1
1:100
05/08/24



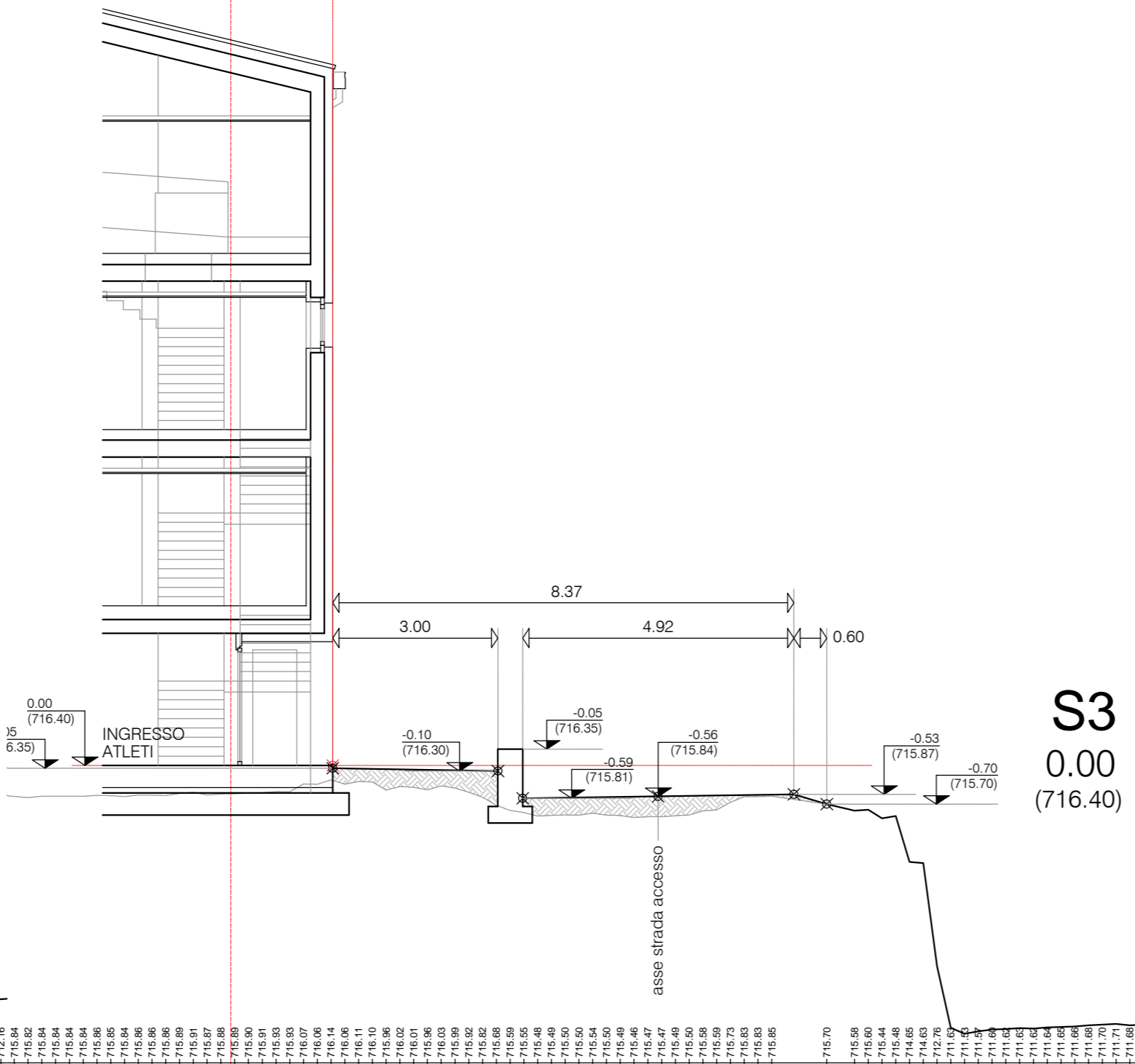
S1
0.00
(716.40)

SEZIONE 2-2
1:100
05/08/24



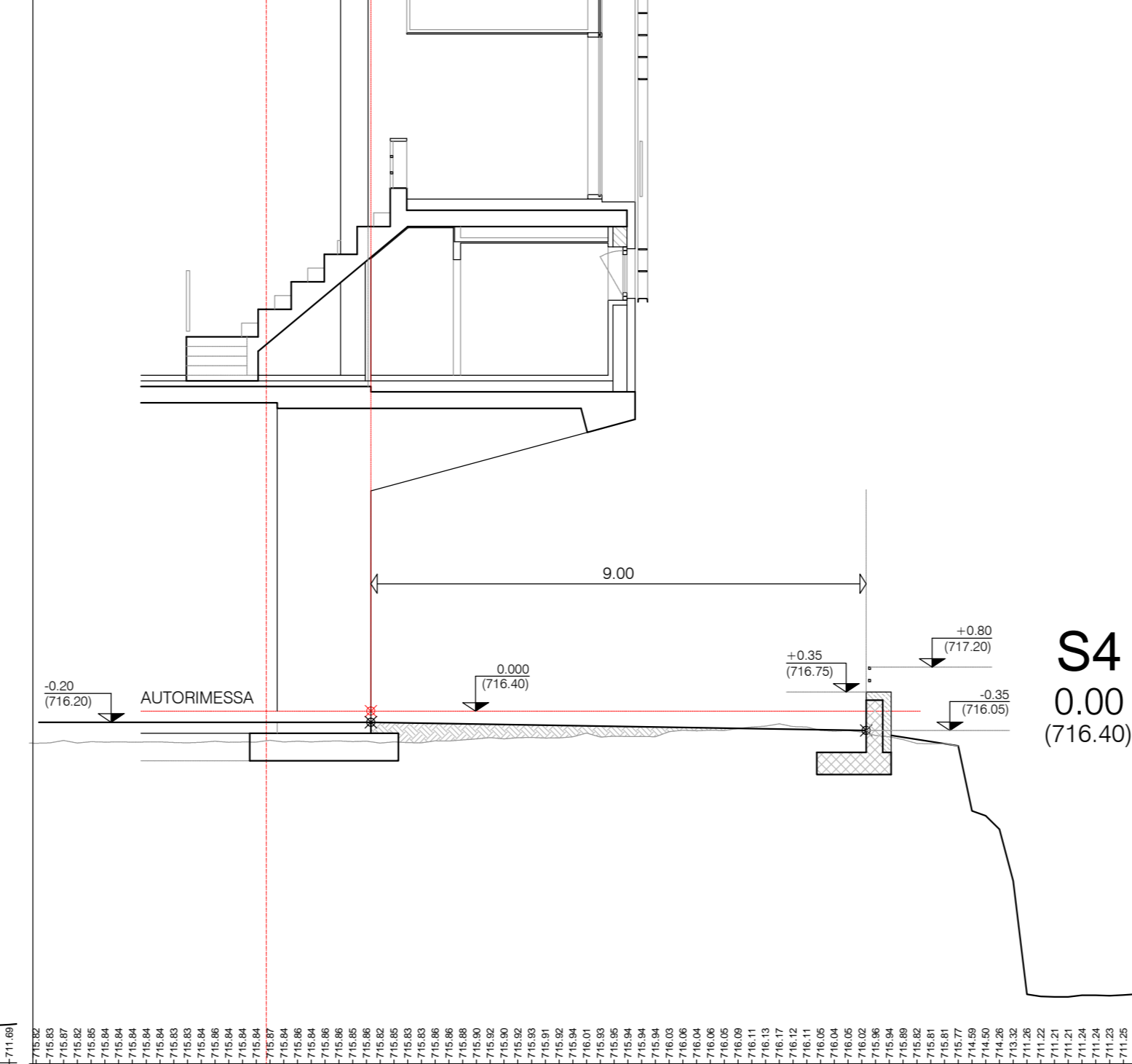
S2
0.00
(716.40)

SEZIONE 3-3
1:100
05/08/24



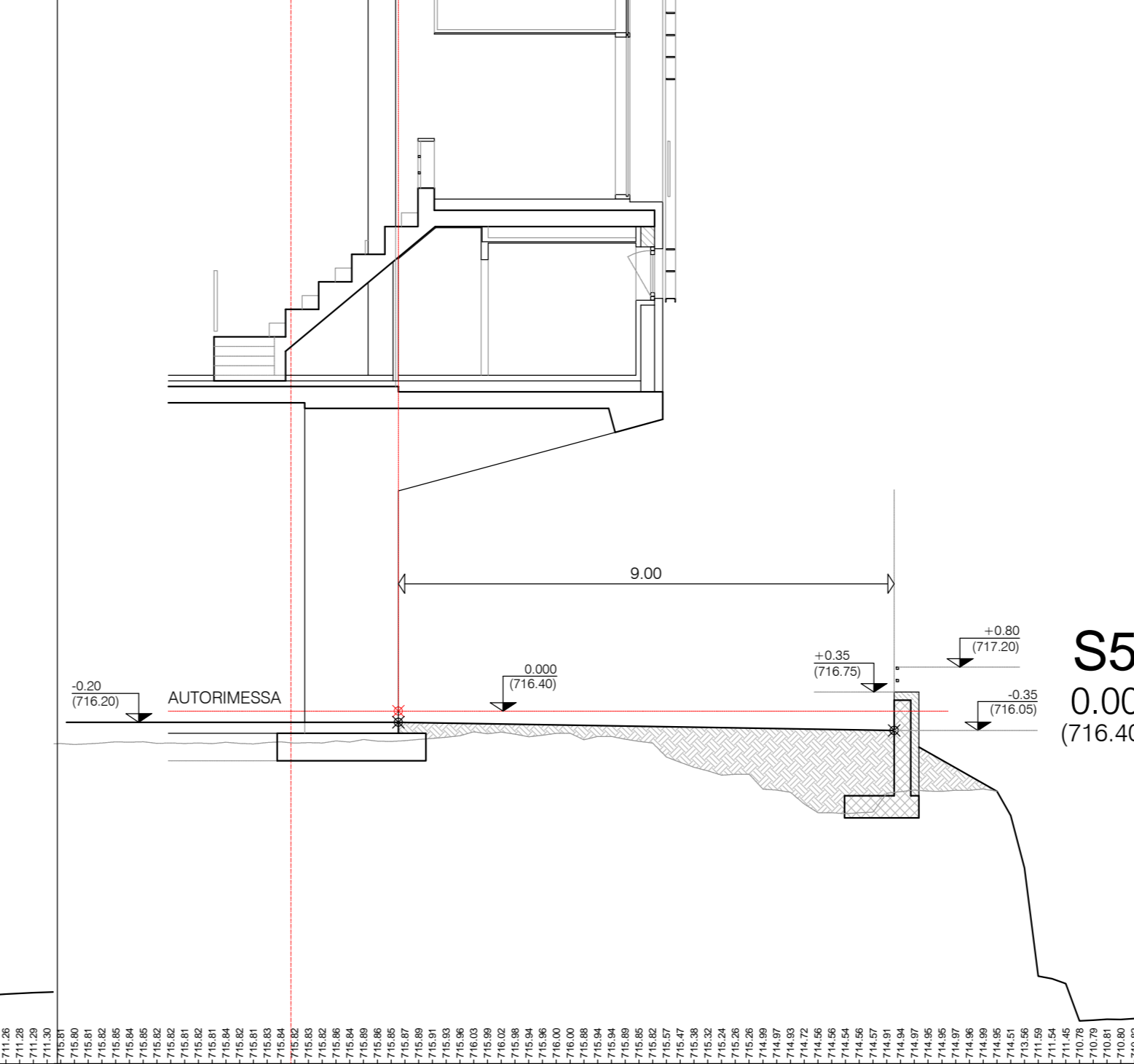
S3
0.00
(716.40)

SEZIONE 4-4
1:100
05/08/24

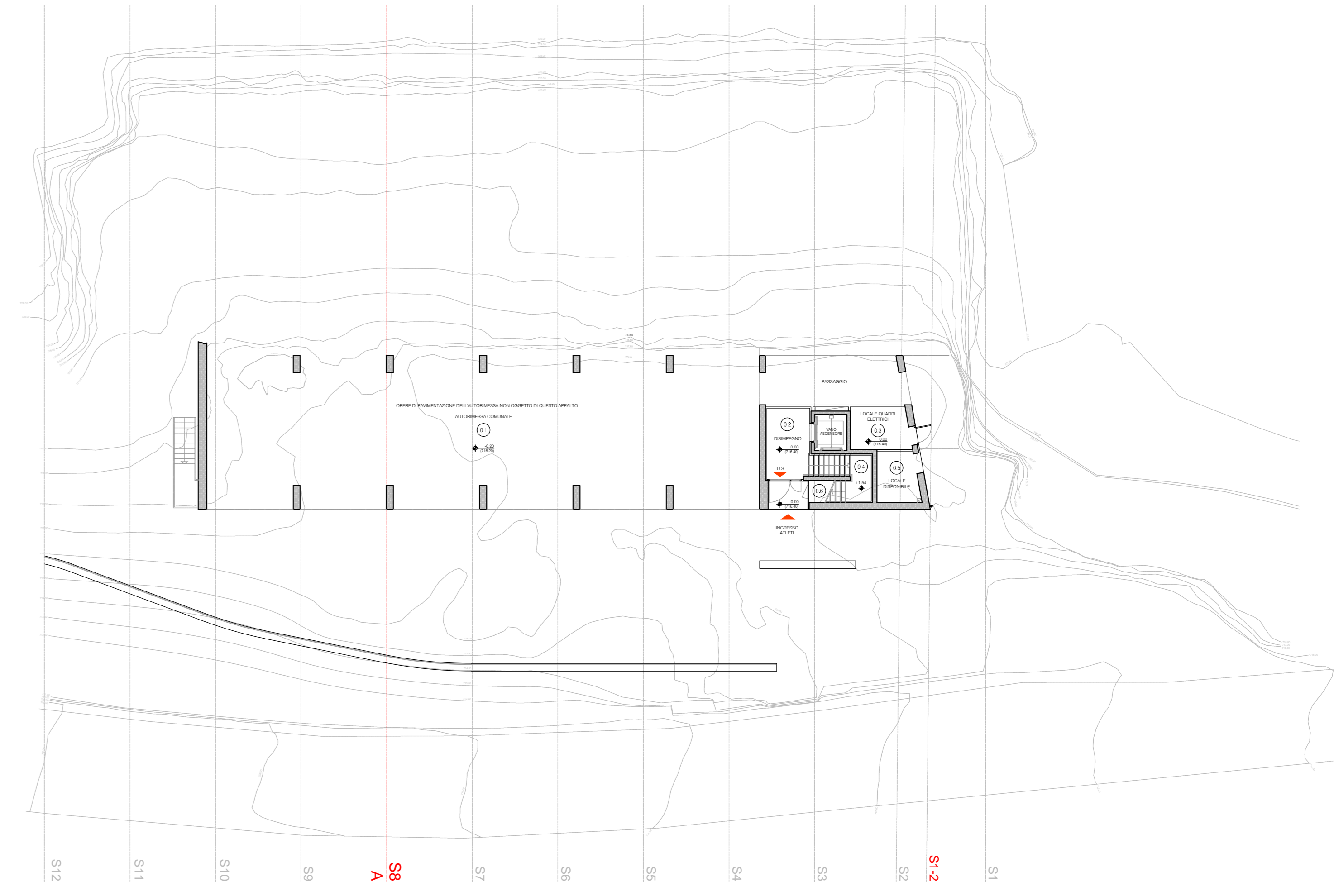


S4
0.00
(716.40)

SEZIONE 5-5
1:100
05/08/24

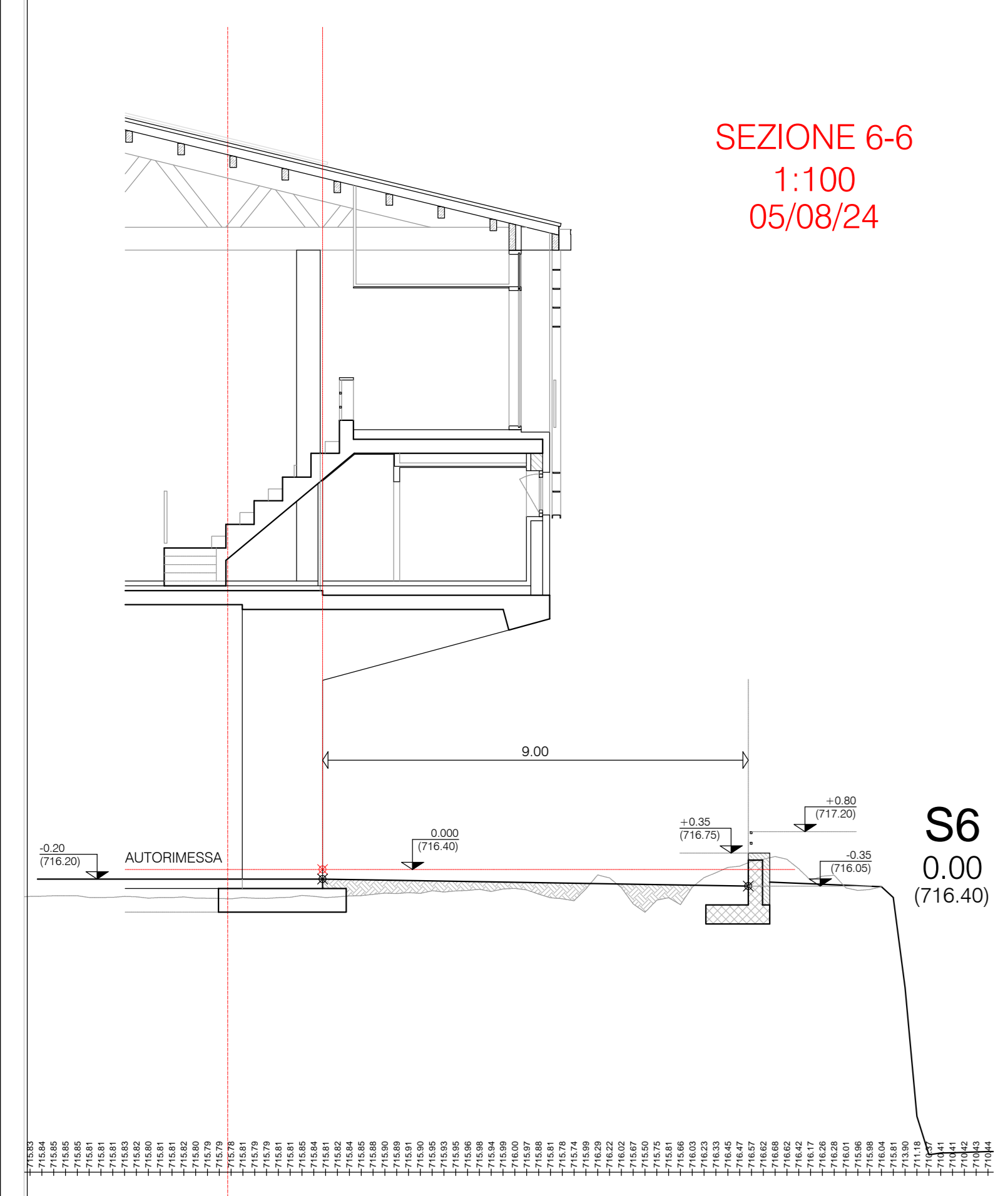


S5
0.00
(716.40)



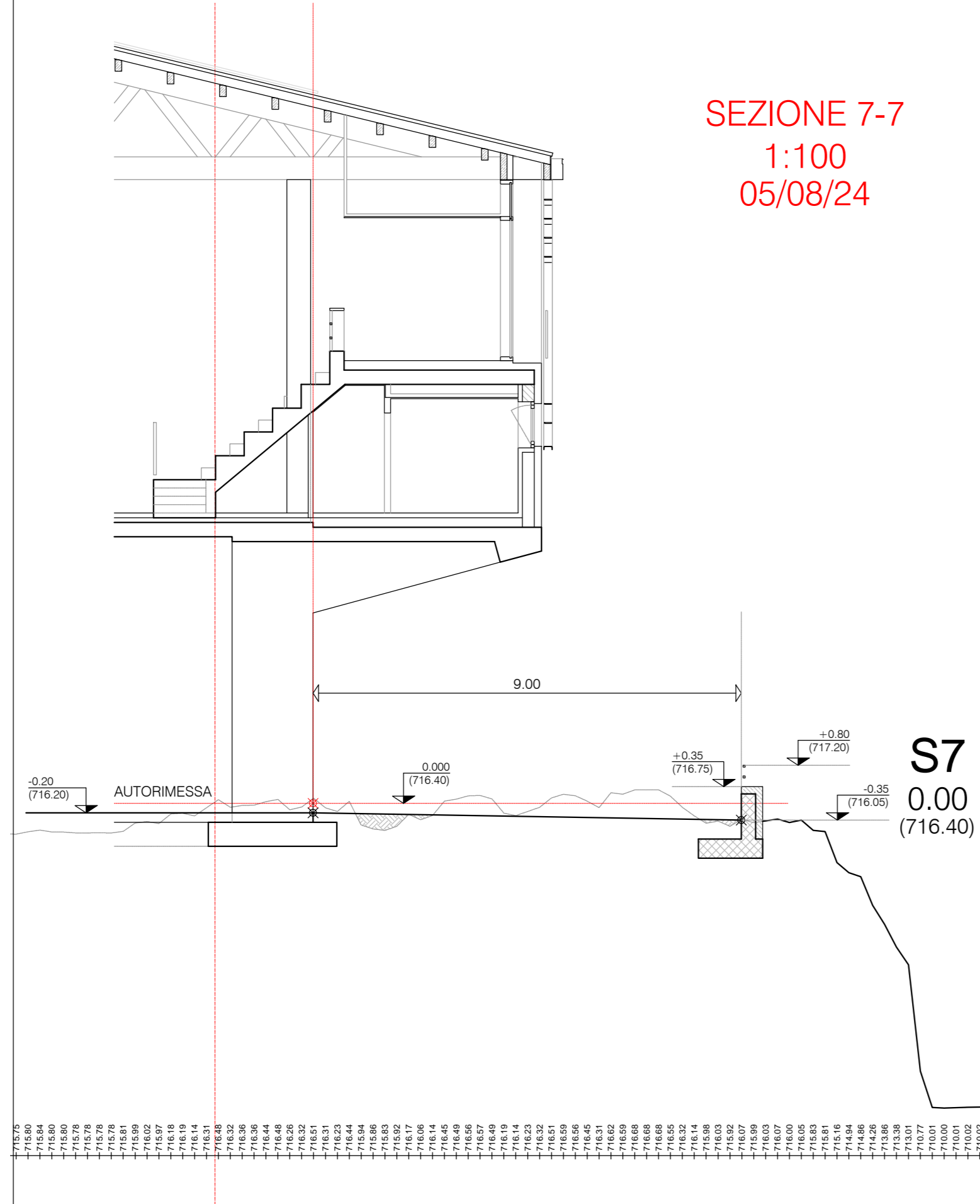
SISTEMAZIONI ESTERNE NON OGGETTO DI QUESTO APPALTO

SEZIONE 6-6
1:100
05/08/24



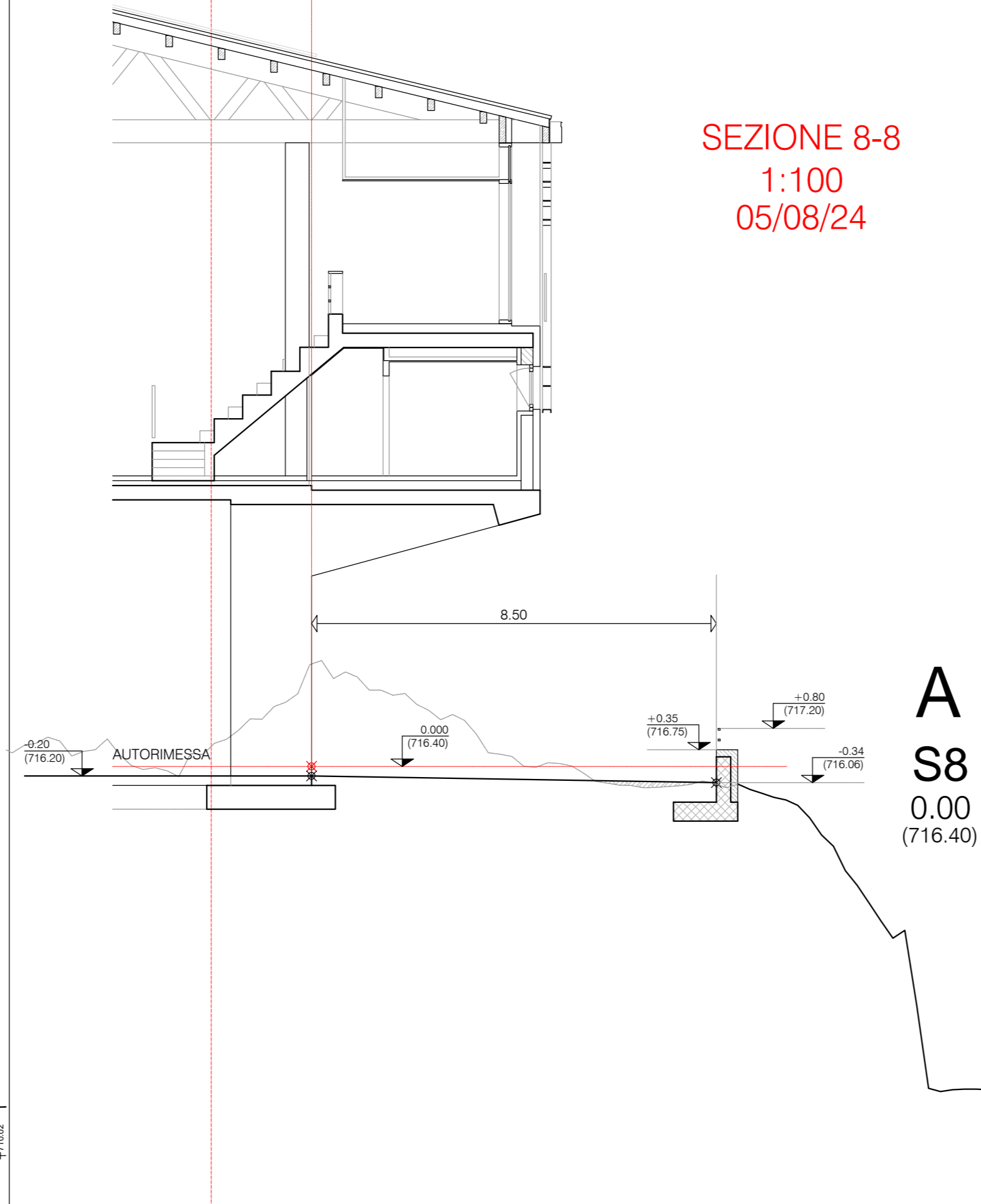
S6
0.00
(716.40)

SEZIONE 7-7
1:100
05/08/24



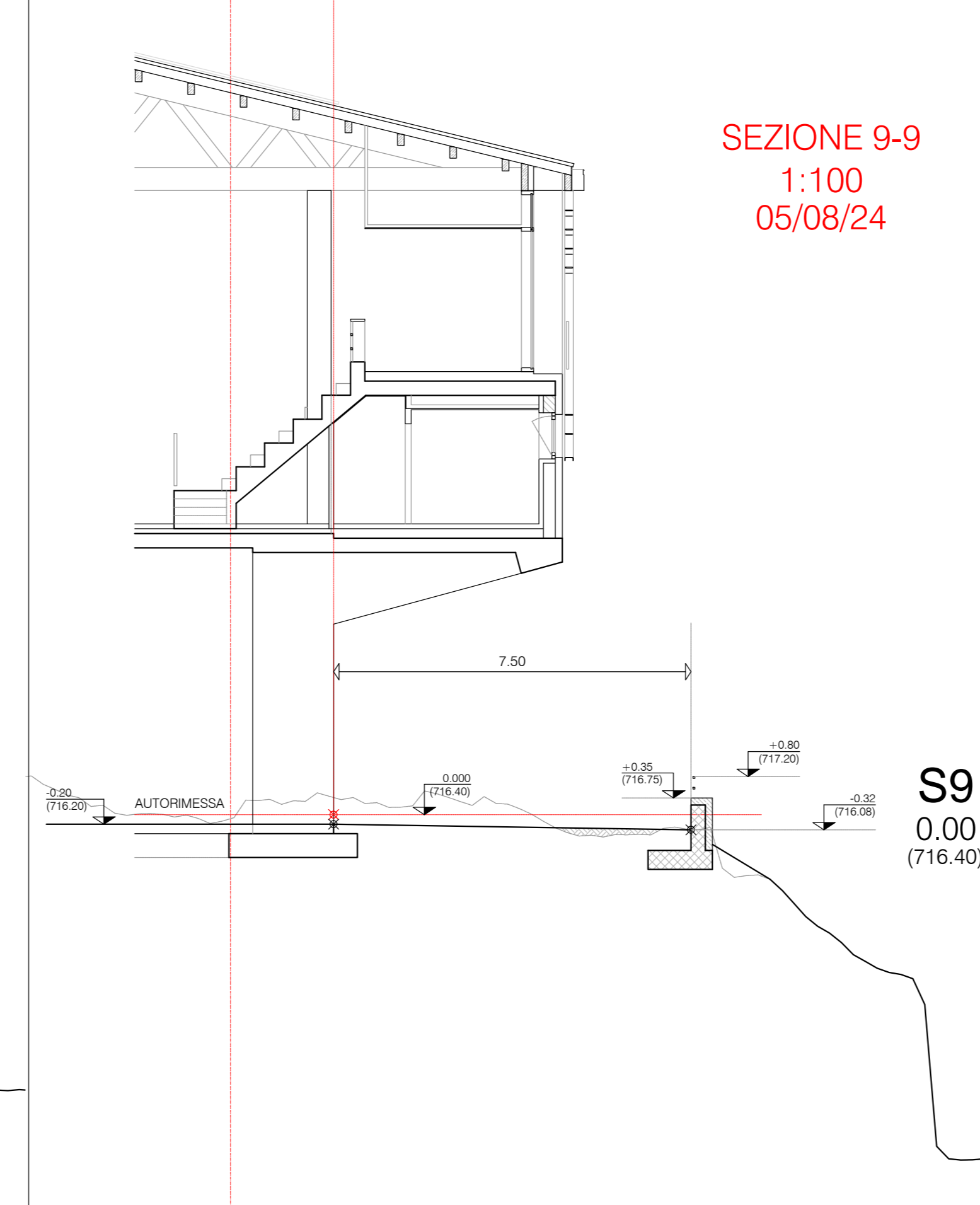
S7
0.00
(716.40)

SEZIONE 8-8
1:100
05/08/24



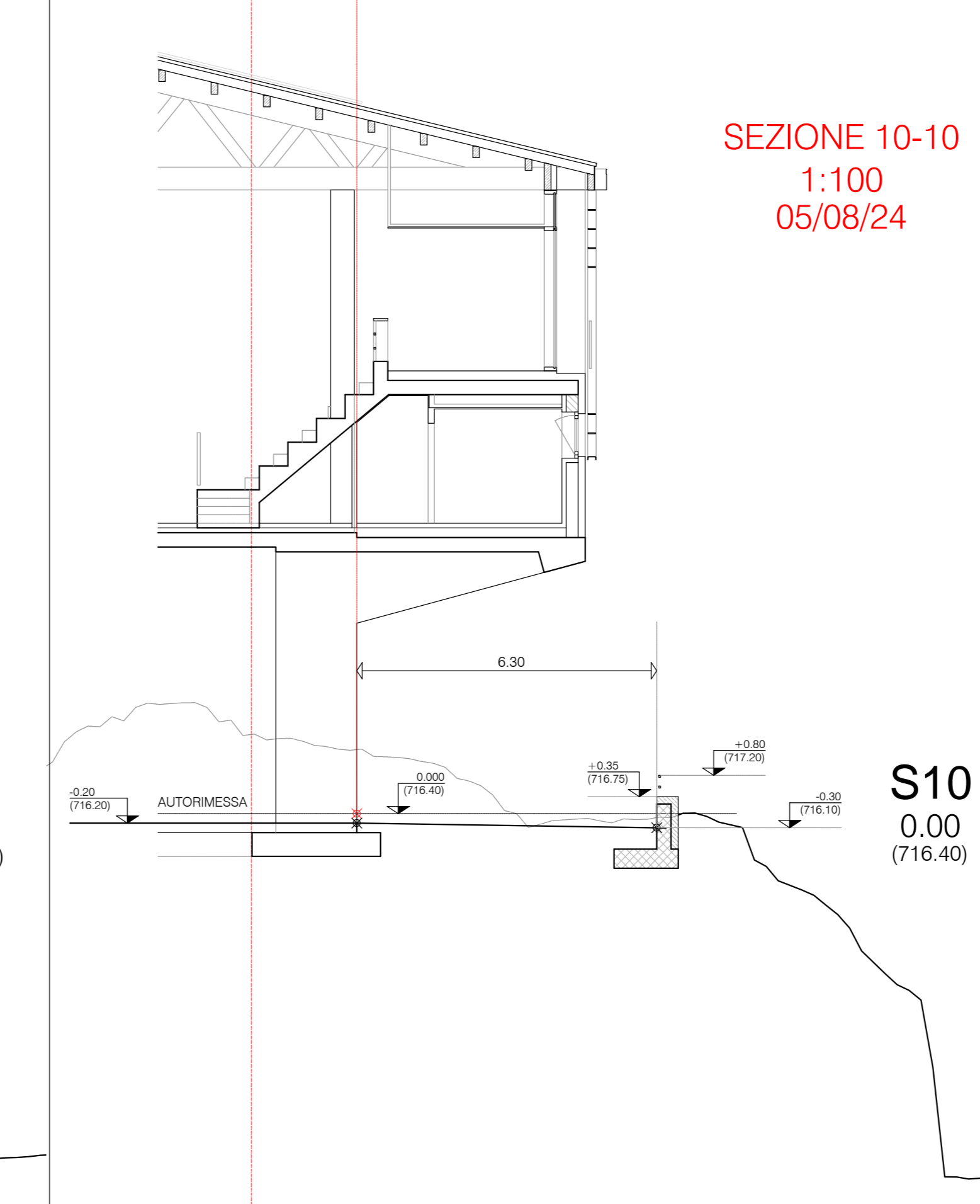
A
S8
0.00
(716.40)

SEZIONE 9-9
1:100
05/08/24



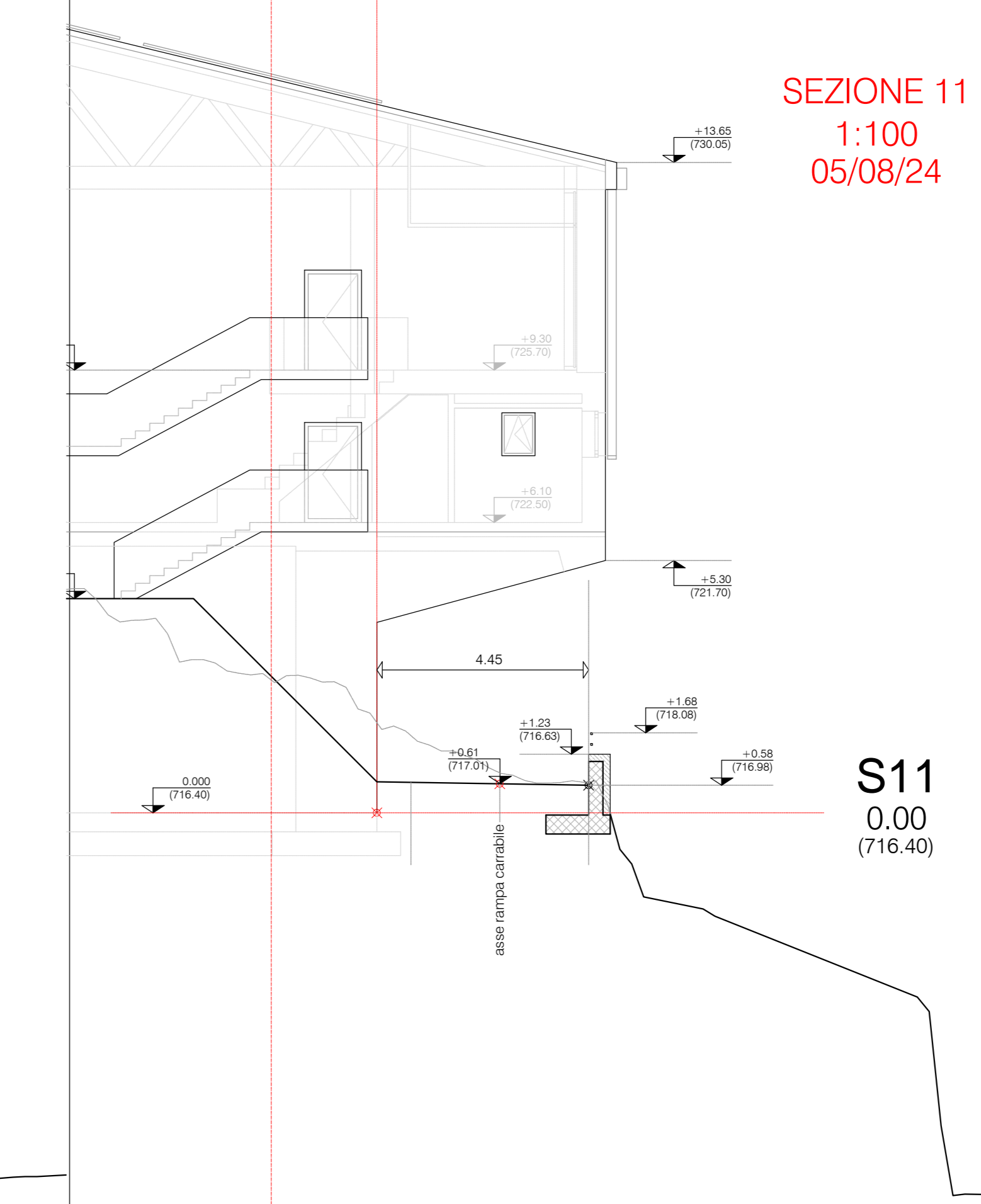
S9
0.00
(716.40)

SEZIONE 10-10
1:100
05/08/24



S10
0.00
(716.40)

SEZIONE 11
1:100
05/08/24

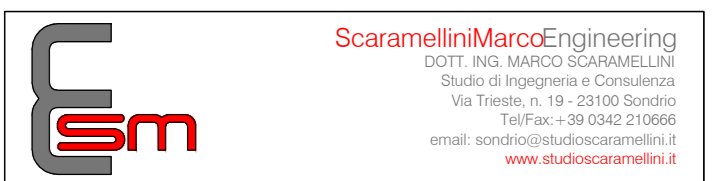


S11
0.00
(716.40)

MANDANTE:
Timbro e Firma
Arch. Giuseppe Sigo
SOCIETÀ ASSOCIATI ASSOCIATI

COLLABORATORI:
Timbro e Firma
Ing. Guido Gastola - Progettazione impianti meccanici

Timbro e Firma
P.L. Davide Fornè - Progettazione impianti elettrici



COMUNE DI CIVO
PROVINCIA DI SONDRIO
AMMINISTRAZIONE COMUNALE
DI CIVO
Frazione Serone 46
23015 - Covo (BS)

PROGETTO ESECUTIVO

REALIZZAZIONE POLO SPORTIVO
COMPRESORIE IN FRAZIONE SERONE NEL
COMUNE DI CIVO

SEZIONI SISTEMAZIONI ESTERNE
A.013

Scala	1:100
Data	Settembre 2024
Proiettore	
Disegnato	I.S.U.
Verificato	I.C.M.
Approvato	I.M.S.